



MSS100 / MSS-VIA / MSS4 Device Servers



MSS100 / MSS-VIA / MSS4 Quick Start Guide



MSS100 / MSS-VIA / MSS4 Device Servers

MSS100 / MSS-VIA / MSS4 QUICK START CONTENTS

System Overview2

What's in the Box3

Pinouts4

IP Addressing7

Connect7

Assign IP8

Configure9

Troubleshoot12

Contact Information13

SYSTEM OVERVIEW

Device Networking starts with a Device Server™, which enables virtually any device with a serial port (RS-232, RS-422/485) to connect to Ethernet networks quickly and cost effectively.

The MSS family of Device Servers includes all of the elements needed for device networking - a processor, an operating system, a robust TCP/IP stack, a web server, and a network connection to provide an Ethernet bridge to serial devices.

The MSS connects to virtually any serial device, for example:

- Barcode scanners
- Card readers and receipt printers
- Scales
- Automation equipment, PLC, and motor drives
- LED message displays
- Medical blood analyzers and ventilators
- Security and access control systems

Our approach to device networking is transparent to your software and attached devices - meaning that you won't need to make any software or configuration changes. It's also scalable and does not require a server or gateway, giving you the flexibility to tackle a project of any size.

The MSS Device Servers are equipped with high-speed asynchronous serial ports supporting baud rates between 300 and 230.3k bits per second, and a 10/100 Ethernet port. In addition, the MSS-VIA has a PC card interface providing 802.11 wireless access to connected devices.

This Quick Start guide explains how to connect, configure, and troubleshoot your unit. For more detailed information and alternative configuration methods, refer to the User Guide and Reference Manual on the CD ROM supplied with this product.

WHAT'S IN THE BOX

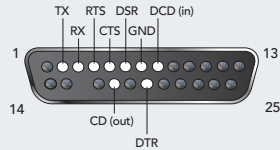
In addition to the MSS, the box contains the following items:

Part #	Component Description
MSS100	
--	Documentation CD-ROM and Quick Start Guide
520-036	For the MSS100-11, power cube with cord
520-062	For the MSS100-12, power cube with international adapters
520-050	For the MSS100-14, desktop IEC power cube with US domestic cord
MSS-VIA	
--	Documentation CD-ROM and Quick Start Guide
520-061	Power cube with cord
MSS4	
--	Documentation CD-ROM and Quick Start Guide
520-061	For the MSS4-D-01, power cube with international adapters

MSS100 FRONT



DB25 SERIAL CONNECTOR (DTE DB25 Male)



MSS100 REAR



Ethernet Port

Reset Button

Power Connector

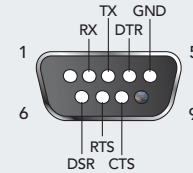
MSS-VIA FRONT



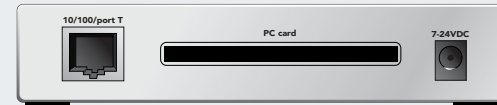
DB25 SERIAL CONNECTOR (DTE DB25 Male)



DB9 RS-232 SERIAL CONNECTOR (DTE DB9M)



MSS-VIA REAR



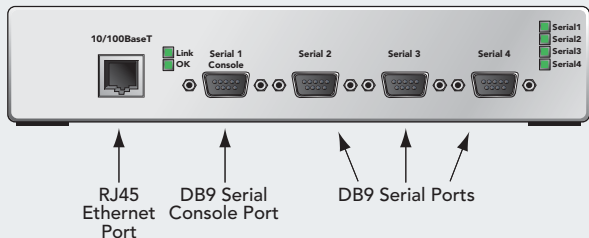
PC card

7-24VDC

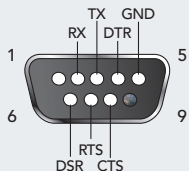
Quick Start Guide

MSS100 / MSS-VIA / MSS4

MSS4 FRONT



DB9 RS-232 SERIAL CONNECTOR



MSS4



IP ADDRESSING

Your unit must have a unique IP address on your network.

The systems administrator generally provides the IP address. The IP address must be within a valid range, unique to your network, and in the same subnet as your PC. You'll need the following information before you set up the unit. (See Assign IP)

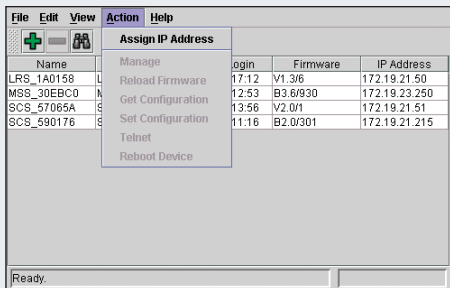
IP Address: _____
Subnet Mask: _____

CONNECT

- 1) Mount or place the MSS in a secured room.
- 2) Connect serial devices to the serial ports.
- 3) Connect your network to the MSS (via one of its Ethernet ports or the PCMCIA slot, if applicable).
- 4) Connect the power supply to the MSS.
- 5) Wait about 30 seconds.
- 6) Confirm the following:
 - a) OK LED blinks green
 - b) Link LED glows green
- 7) If the MSS is connected to the network via the PC card slot or Ethernet, confirm the following:
 - a) PC Card LED glows green
 - b) 100 LED glows green if there is a 100Mb connection

ASSIGN IP

- 1) Open EZWebCon on the CD-ROM.



EZWebCon Home Page

Note: The EZWebCon wizard walks you through the process of assigning an IP. The **Next** button at the bottom of each EZWebCon screen advances you to the next step in the process.

- 2) Click **Action → Assign IP Address**.
- 3) Select the MAC address of your SCS device and click **Next**.
- 4) Select **Assign Specific IP** and click **Next**.
- 5) Type your IP Address.
- 6) Confirm the Subnet Mask Address.
- 7) For **Gateway**, select **None**.
- 8) Click **Next**.
- 9) Click the **Assign IP** button.
- 10) Click the **Done** button.

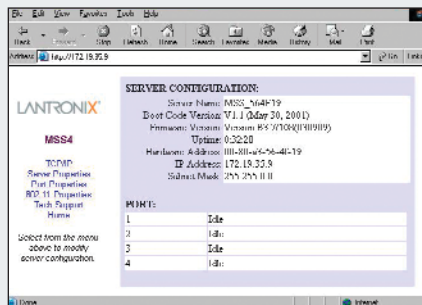
Note: Your device name and IP address should be listed in the EZWebCon window. If it is not, minimize and then restore the window.

CONFIGURE

- 1) In the EZWebCon window, click the device name you wish to configure.
- 2) Click **Action → Manage**.

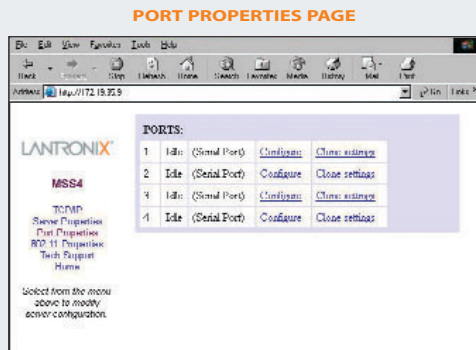
Note: Your Web browser opens, displaying the Server Configuration window.

SERVER CONFIGURATION



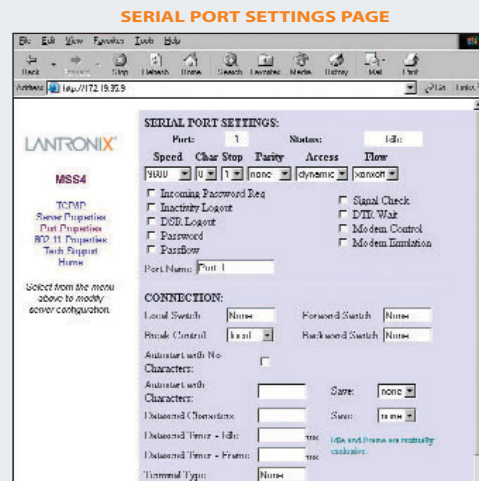
CONFIGURE (CONT.)

- 4) Configure a group of settings:
 - a) Select a link from the left navigation column, for example, **Ports**.
 - b) Enter the password, **system** and press **Login**
 - c) Confirm that a window similar to this displays:



- d) Click the **Configure** link for the port you want to configure.

- e) Confirm that the following screen displays:



- f) Configure the port settings and click the **Update Port Settings** button at the bottom of the window when finished.
- 5) Repeat step 4 for the other groups of settings.
- 6) To close the active sessions and implement the changes, power cycle to reboot.

TROUBLESHOOT

LEDs on the top of the MSS indicate Ethernet and serial activity. The significance of these LEDs is explained in the following table:

LEDS	COLOR	MEANING
Serial	Green blinking	Serial transmissions
OK	Amber/red blinking	Not booting
OK	Green blinking	SCS functional
PC Card	Green	Card functioning
PC Card	Amber blinking	Card recognized
PC Card	Red blinking	Card not recognized
100	Green	100Base-T valid
Link	Green	10/100Base-T valid

CONTACT INFORMATION

For questions and technical support, please check our online knowledge base at www.lantronix.com/support

If you need additional help call us at:

(800) 422-7044 Domestic
(949) 453-7198 International
(949) 450-7226 Fax

Lantronix

15353 Barranca Parkway, Irvine, CA 92618, USA

Phone: (949) 453-3990 • Fax: (949) 453-3995 • www.lantronix.com